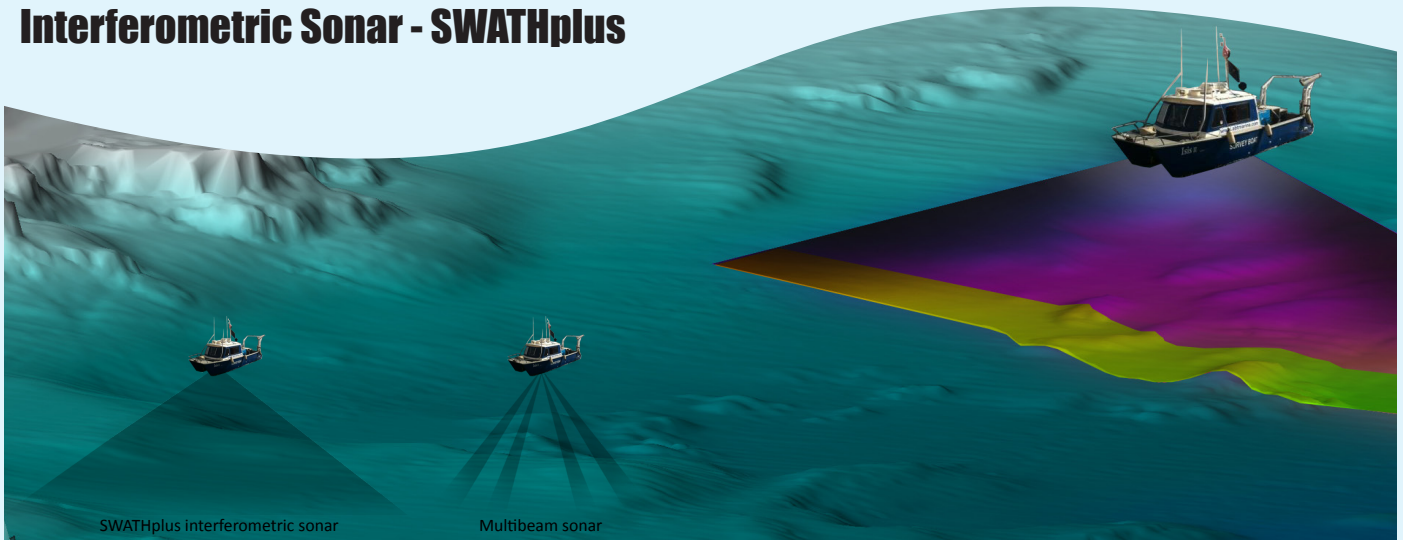


Interferometric Sonar - SWATHplus

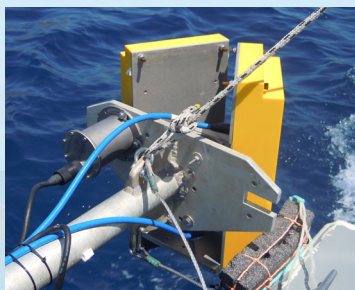


SWATHplus interferometric sonar

Multibeam sonar



ABT Marine is a part of the **AquaBioTech Group**, and as an independent marine hydrographic survey firm, we offer a broad range of capabilities in survey, construction support, precise positioning and project management within the marine industry.



Acquisition of both bathymetric and side scan data can be achieved through the use of IHO standard-compliant interferometric sonar systems capable of producing both **Digital Terrain Models (DTM)** and **side scan imagery of the seafloor**. Bathymetric data shows an **accurate, color-coded depiction of the seabed that can be presented in 2D or 3D according to the nature of works or requirements of the client**.

This technique is ideal when accurate depth profile information is necessary. Side Scan Sonar data provides a flat, monochromatic, picture-like representation of the surveyed area. Side Scan data alone does not represent bathymetry (depth), but its **high image resolution makes it ideal for detailed examinations of the seabed where obstructions, wreckages, debris, boulders, cables or any other feature must be identified**.

SWATHplus Specifications

Sonar frequency	117 kHz
Maximum water depth	350 m
Across-track resolution	5 cm
Azimuth beam width (2way)	0.85°
Transmit Pulse Length	17 μ s to 1 ms
Transducer dimensions	235 x 550 x 90 mm
Transducer weight in Air	13 Kg
Transducer weight in Water	1.6 Kg

Using SWATHplus interferometric sonar allow us to drastically reduce the time needed to survey an area (40% to 100% faster than usual technology). SWATHplus data acquisition system is based on the measures of depths across a wide track with high resolution and accuracy.

Our sonar is supported by **Differential GPS, and SHIP MOTION IMU-108 motion sensor** for attitude compensation which guarantee sub-meter accuracy on data collection and processing.